

# MONTHLY MEMBERSHIP PROGRESS REPORT

LOCATION BRITISH COLUMBIA

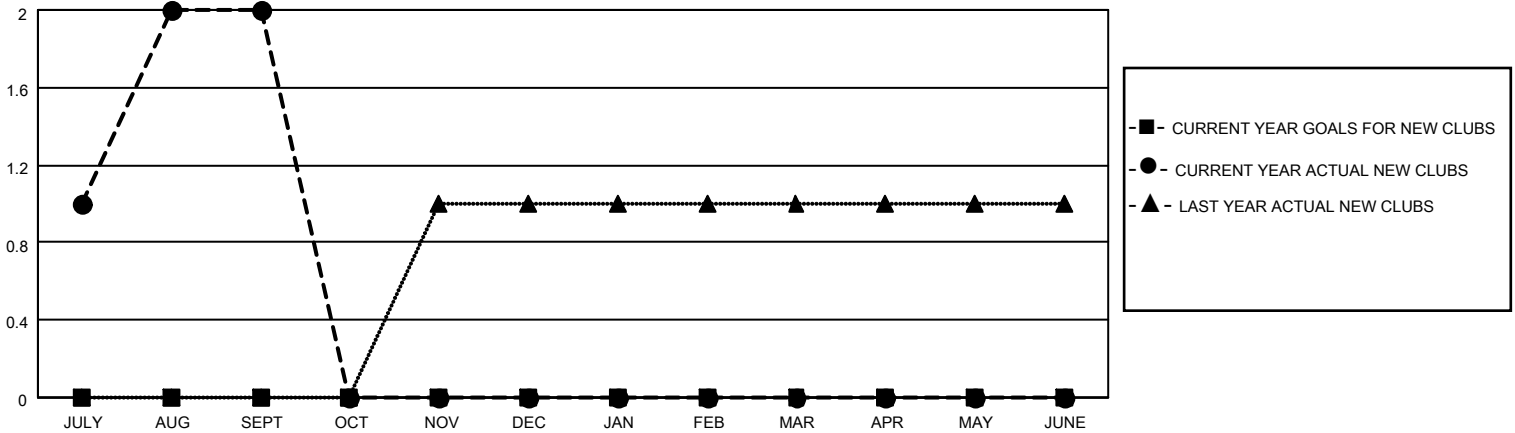
District 19 A

Results as of: 9/30/2020

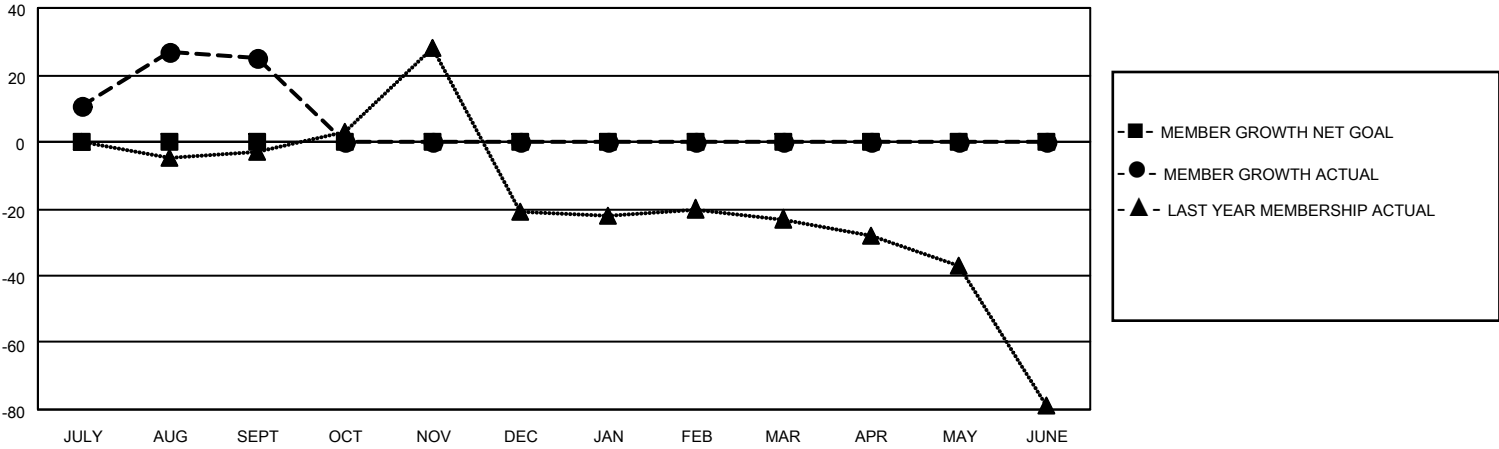
Clubs			
RESULTS FOR 2020-2021			
QUARTER	NEW CLUB GOAL	NEW CLUBS	DROPPED CLUBS
JULY/AUG/SEPT	0	2	0
OCT/NOV/DEC	0	0	0
JAN/FEB/MAR	0	0	0
APR/MAY/JUNE	0	0	0

Members			
RESULTS FOR 2020-2021			
QUARTER	MEMBER GROWTH NET GOAL	MEMBER GROWTH ACTUAL	DROPPED MEMBERS ACTUAL (including transfers)
JULY/AUG/SEPT	0	60	30
OCT/NOV/DEC	0	0	0
JAN/FEB/MAR	0	0	0
APR/MAY/JUNE	0	0	0

**GOALS AND ACTUAL NEW CLUBS CUMULATIVE**



**GOALS AND ACTUAL MEMBERS CUMULATIVE**



DROPPED CLUBS: 0	8 CLUBS OF 52 ADDED 1 OR MORE NEW MEMBERS	<u>GENDER DISTRIBUTION</u>
<u>DROPPED MEMBERS</u>		MALE            639 (56.20%)
DECEASED            3		FEMALE        498 (43.80%)
CLUB CANCELLED      0		TOTAL FAMILY UNIT MEMBERS            87
OTHER                 27		FAMILY MEMBERS PAYING HALF DUES            45
<b>TOTAL                 30</b>	<a href="#">CLICK HERE FOR CUMULATIVE MEMBERSHIP DATA</a>	